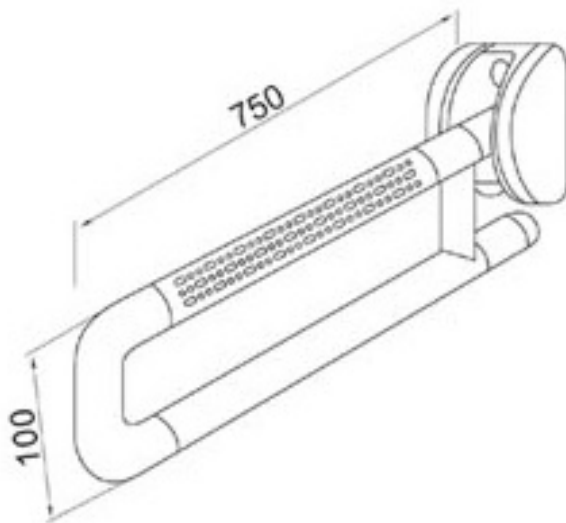
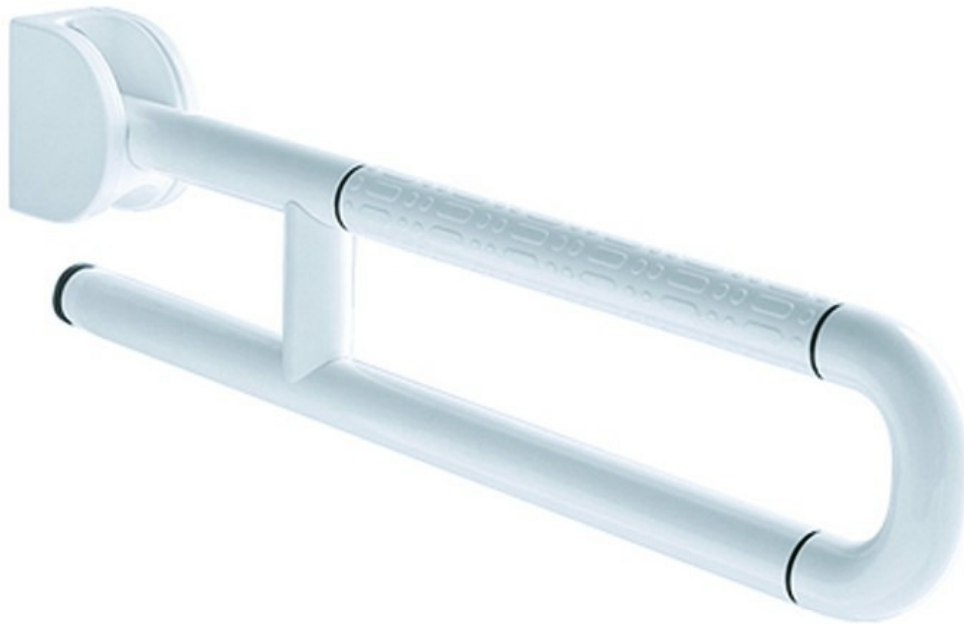




Brand : Bellini
Model : AT-7350
Color : White
Size : 750mm (Ø35mm)
Description : Folding grab bar
Origin : PRC
Remarks : Loading test report No. : J16258





NUTEK SYSTEMS, LTD.

Unit B, 13/F., Block A, Universal Ind. Ctr., 23-25 Shan Mei Street, Fo Tan, Shatin, N.T., Hong Kong.
Tel: (852) 2605 5736 Fax: (852) 2692 0798 E-mail: nutek@nuteksystems.com

TITLE : Testing of Rail
OUR REFERENCE : J 16258
DESCRIPTION OF SAMPLE : 600mm Surface mounted straight hand rail
SAMPLE SUBMITTED BY : E & I International Limited
9/F., Wing Tai Centre, 12 Hing Yip Street,
Kwun Tong, Kowloon, Hong Kong.
MANUFACTURER : E & I International Limited
BRAND : Bellini
MODEL : AT-7350/WH
COUNTRY OF ORIGIN : China
TEST REQUIRED : Loading test
PERIOD OF TESTS : 16th July 2012

RESULTS : - (apply only to the sample tested)

LOAD TEST

The grab rail sample was installed onto a concrete wall made of concrete mix grade 30D10 (cement to BS12: 1978 and Aggregate to BS882: 1973).

A test load was applied vertically to the mid point of the rail which was then examined for any signs of damage.

	Test load (kg)	Duration (minute)	Visual damage (e.g. breakage, deformation, etc.)	Remark
Sample	150	15	No visual damage	Pass

Date : 15 JAN 2013 Authorized signature : _____

Nutek Systems is a testing apparatus approved by the Water Authority Government Supplies Department, for testing water supply fittings.


Sunny K.S. Wong

(Director)